

Pattern
Libraries
for

COOL:Plex

by  STERLING
SOFTWARE

ATOL Foundation+ 98

The keys to your development

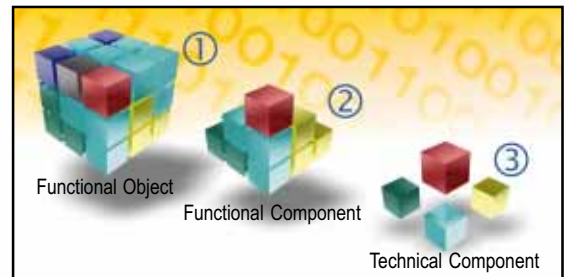
Pattern Libraries for COOL:Plex

ATOL/98 contains Technical and Business Class Libraries (○ Obase environment).

ATOL/Foundation+ contains Pattern Libraries (+ Pattern environment).

With ATOL you can :

- Reduce the development and maintenance time,
- Give more conviviality and functionality to the end user,
- Reduce the number of windows for the end user,
- Reduce the need to master the technical aspects in using the new technologies,
- Link your application with the standard windows products and use their functionalities.



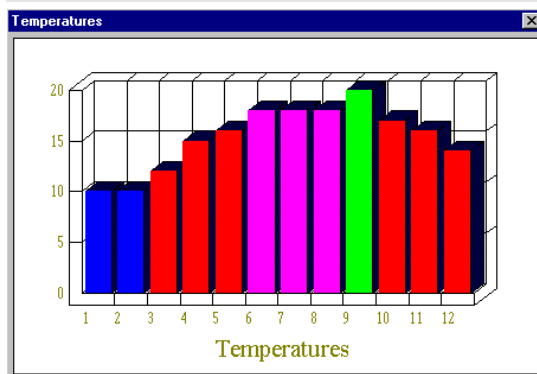
○ contained in ATOL/98

+ contained in ATOL/Foundation+

"ATOL improves our development team productivity while concentrating on our company mission."
Gilles MENEGAUX, Dp Director,
BACARDI-MARTINI

ATOL/Utilities(+): Technical components

- + **String Handling** : Usual functions to manage string of characters.
- **Automatic Record Numbering** : To assign automatically a value to a numeric key or numeric attribute. Last numbers allocated are stored in only one table.
- + **DOS File and Directory Handling** : To manage Dos files and directories.
- + **Global Memory Management** : To manage data in global memory. These data can be either fields, structure fields, fields contained in variables or views.
- + **PC Memory Management** : To manage data in PC file (INI file type). These data can be either fields, structured fields, fields contained in variables or views.
- + **Message Box** : To display and to parameter dynamically a message box (same as Windows standards).
- + **Windows** : Some functions to extend the power of your application on Windows client system.
 - + **Grid** : Some functions to put and get information from the COOL:Plex grid object.
- + **Object** : To execute a Windows program or to execute an operation on a Windows document.



○ + ATOL/Comment(+): Text management

To manage a multi-line comment field of unlimited length associated with each record of a database table.

○ ATOL/Calendar: Visual calendar

To select a date in a visual monthly calendar. The prompt process is implanted automatically. Drag & Drop is supported.

○ ATOL/Search: Find and select window

To search records of the database from an alphanumeric key and according to a selection criteria which can be changed by the user.

○ ATOL/Grids: Manages information in a window with grids

To display one to four grids within the same window, each of them joined to a table of the database.

○ ATOL/Edit: Manages information in a multi-mode window

To manage database records (6 program's modes available) or to edit fields or parameters (like a process dialog) in a single window.

○ ATOL/Tab: Manages information in a window with tabs

To manage database records (6 program's modes available) or to edit fields or parameters (like a process dialog) in a window with tabs. It allows you to present the items in a folder with tabs, avoiding cascaded openings of several windows and facilitating direct access to the information. A Tab can display several single or grid regions.

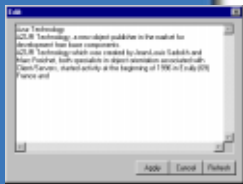
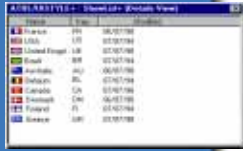
○ ATOL/Maintain: Abstract suite

To create quickly abstract or real Suites with few inheritance levels by assembling functions. This class is designed to support ATOL/ Edit, ATOL/Tab or OBASE/Standard function dialogs.

○ ATOL/SuiteTab: Abstract suite with tabs

To create quickly abstract or real Suites with a Tab maintain window that contains different grids.

ATOL/98
ATOL/Foundation+



ATOL/Browser : Manages information in a tree structure

Allows you to display the information from the database in a tree form, similar to the Windows File Manager or COOL:Plex's browser.

ATOL/Browser Plus Tab : Manages information in a browser with tabs

Allows you to display on the same panel a browser in the left part and a Tab dialog in the right part.

+ ATOL/Combo(+) : Automatic combo box loading

Allows you to load automatically database file records in a Combo Box (list box) with an optional memory management.

+ ATOL/Export(+) : Export data to a Windows tool

Enables the content of one or more files (complete or partial) from the database to be inserted within other Windows software or within a newly created text file.

ATOL/Glossary : Windows application glossary

Allows you to store the name and location of frequently used Windows applications (personal productivity tools, communications programs...) for each PC.

+ ATOL/DDE(+) : Communication via DDE

Allows you to control a Windows application from an Obsydian application without direct intervention by the end-user.

+ ATOL/Graph(+) : Displays data in a graphic form

Allows you to obtain a graphic view of a sery of data items from the database.

+ ATOL/Video(+) : Multimedia data management

Allows you to run a video clip within a special window or within an existing COOL:Plex window.

ATOL/Wizard : Wizard management

Allows you to insert assistance and, where desired, guided-entry windows within existing applications. A Wizard can display several single or grid regions.

ATOL/Document : Manages header and detail in a window

To manage database records of a document (parent-child type) within a single window, that contains a Header, Footer and Detail lines (child records). The detail is displayed and managed in a grid, which support edits mode, automatic record numbering, resequencing and differed validation.

+ ATOL/ListView+ : Manages information in a List

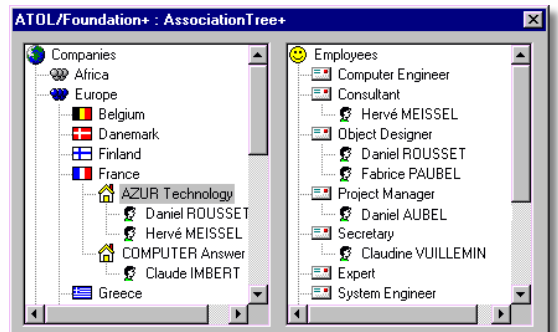
Allows you to display information from the database (from multiples files or memory arrays) in a list, this control is similar to the right part of the Windows explorer. Then you can display the records in an Icon, Small, List and Details(report) form. By the way you can associate a special column header for each file displayed. It includes some handling items function like Adding an item with an automatic or specified picture (could be read directly from database), managing order of appearance, adding column, removing item or columns and many more... Furthermore, it manages dynamic and page per page loading.

+ ATOL/Sort(+) : Automatic grid sorting

This class enables to sort dynamically a grid by different sort criteria defined by the end user. These sort criteria can be saved in a .INI file and used as defaults. The header of the sorted columns is changed so that the end-user can see the current sort criteria directly in the grid.

+ ATOL/TreeView+ : Manages information in a tree structure

Allows you to display information from the database (from multiples tables or memory arrays) in a tree form, similar to the windows explorer or COOL:Plex browser. It manages up to 12 levels and it includes some handling nodes functions like adding a node with an automatic or specified picture (could be read from database), changing the node's text, removing a set of node (or child's node), copying and moving nodes between level, expanding and collapsing node, managing order of appearance, automatic Drag & Drop in the tree, and many more... Furthermore, it includes the page per page loading management.



+ ATOL/DuoTree+ : Manages information in two tree structure

Allows you to display information from database in two separated tree on the same window. It includes automatic Drag & Drop between Trees.

+ ATOL/Association Tree+ : Automatic association management between tables in two trees

It allows you to manage the associations between several tables displaying under a tree form. It provides the end users the possibility to navigate in a tree form structure, to manage data base links with a simple Drag & Drop, in a single window.

+ ATOL/Recursive Tree+ : Automatic reflexive relation management in a tree form

It allows you to manage, in a tree form, a reflexive relation as in a hierarchic structure (company organisation, product nomenclature).

+ ATOL/TreeWithList+ : Display different information in a tree form and in a list form on the same window

It allows you to display on the same window a TreeView in the left part and a List view on the right part. Then selecting a node in the tree determines the representation of the ListView (column header and contents). Drag and drop is available between this two controls.

+ ATOL/Explorer+ : Windows Explorer behavior for database management

It allows to display database links on the one side under a tree form and on the other side under a ListView form. The list represents the database links of the selected node but on a lower level. Futhermore it allows descending in the list controls the loading of the current selected node in the same way as the Windows explorer behaves.

AZUR Technology
Technoparc
3, allée du Moulin Berger
69130 ECULLY-FRANCE
Tél : +33 4 72 52 30 00
Fax : +33 4 72 52 30 09
info@azurtechnology.com
www.azurtechnology.com

Pattern Supplier

